

# Star★Types

by Michael Erlewine

L I F E S T R A T E G Y

Trading on Your Talents



StarTypes Strategy Report for:  
Johnny Depp

This reading compliments of:

Matrix Software

Contact: 231-796-4163

Web site: <http://www.astrologysoftware.com>



# Table of Contents

## Index

1. Introduction
2. StarType Profile
3. Talents
4. What You Want
5. Balancing It All
6. Approach to Relationships
7. StarType Elements
8. Social Skills
9. Relationships
10. Job Placement
11. Business Skills
12. Polarities
13. Conclusion

# Introduction to Star★Types

L I F E S T R A T E G Y



StarTypes is a new approach to astrology, one that combines the ancient and venerable tradition of astrology with the insights of modern astronomy and the solar system. Using large-scale whole-chart planetary patterns, StarTypes defined two completely different views of your birth, two different perspectives on the same moment in time and the same planets, combine to provide an almost three-dimensional view of the birth moment. Developed by well-known astrologer Michael Erlewine over a 40-year period, StarTypes excels at defining relationships and vocational issue, an astrology for the 21st Century.

# Star★Types Profile



We all have talents and we all have needs and wants. Just as in the workplace we trade our talent (work) for what we need (money, security, etc.), astrologically StarTypes are no different. Each StarType has certain innate gifts or talents, something that makes us special and valuable. It can be important to know what those talents are.

By the same token, each StarType also has legitimate wants, areas where we tend lack functionality, areas we might want to shore up and strengthen.

Life is a vast commodities trading center, where StarTypes of all kinds build relationships that are complementary. You may have what I am missing and vice versa, so we become friends or co-workers. Or even if you have nothing to trade with me, I may have a talent for some work that I can do for you to gain access to the missing ingredients that I need.

Money and things is not all we trade or barter. Love relationships, friends, partnerships, co-workers, families, etc., all are made of matched components, like jigsaw-puzzle pieces, each dovetailing into one another. Everything from a two-person partnership to our friendly poker party... to small and large corporations, all are made up of individuals fitting together into a team or group. Like a patchwork quilt, we all fit together individual piece by piece.

It does not so much matter what talents you have, whether they are few or many. What is important is that you are aware of what you are worth, the talents you do have, and know how to use them to get what you want. This is what this section is about.

In the sections that follow you will find a discussion of your talents, another on what you lack and might want to improve on, and also a section on just how you might go about balancing yourself by forming strategic relationships of various kinds, suggestions on how to use what you have and get what you want.

And finally, there is a section on how you approach relationships, with suggestions on the other StarTypes with which you might want to partner up.

Johnny is all about "mental,"

using the mind, and has great conceptual abilities, grasps things with his mind with ease, and can pick out the patterns right off. In other words: he always sees the forest and the trees. This talent for grasping abstract concepts coupled with a broad vision makes him perfect for management that involves planning, organizational matters, and sizing things up. Johnny is naturally forward looking, eager and always interested in the future, at times even reaching the visionary level. He is naturally compassionate, aware of others, and is generally kind.

As mentioned Johnny's management talent is solid, but this can leave his co-workers feeling a bit cool on the cool side, since he is not a touchy-feely type of person. Johnny thinks outside the box, and that 'outside-ness' or distance makes him probably NOT the best person to take the visiting client out to dinner, because he runs to matters of the mind and is not much fun in the warm and cuddly sense. Johnny's broad mind and dependence on operating from a fairly abstract place can make him impractical in social situations, due to a lack of experience and common sense.

# Your Talents



We all have various talents. They are what we have to use to make our way (and make a living) through life. Some StarTypes have many talents and others have just a few. Many or few talents are not as important as being aware of those you have and thus knowing what you can do and have to offer to others in exchange and partnership. Here is an overview of you talents.

The up-side of your StarType pattern is that you have a first-class mind, not just a 'good' mind, but an exceptional ability to analyze a situation, take it all in, and come up with a clear perspective on what you see, a perspective that is useful to you, of course, but one that is also useful to society. This kind of talent can easily put you in top management positions in whatever kind of work you prefer.

As mentioned, you have a very bright mind, powerful intellect, and are a 'Big Picture' thinker, able to get the gist of a situation right off. Also good with language, you can probably write and (certainly speak) with ease. You have a way with words. You are very responsible and this gives you strong management potential and real organizational skills. Your mind is the key to your career. Mental skills are your ticket.

# What You Want, What You Lack



We are not only made up of talents. Some talents, however useful they are, also have a downside. And in other areas of life we may just not have any talent at all.

Before we can do something about what we lack or want, we have to be aware of just what areas we come up short on. Knowing our weak points is essential for any kind of adjustment. If we don't see the what's missing we can't compensate for that. Here are some of the main problem areas for this StarType.

A possible downside to all your talents is that you are perhaps too "mental,"

too abstract and analytical, making you a wizard when it comes to putting words to concepts, but all thumbs when it comes to social interaction and the touchy-feely stuff. Basically this is shyness on your part and a lack of physical contact in general. You may find yourself too often as a wallflower taking it all in rather than a participant at the center of a group gathering. It can be too easy to count yourself out rather than in when it comes to being social, and this can extend to relationships in general, including that of a life partner.

In general, for all of your mental ability, when it comes right down to where the rubber meets the road, you can tend to lack plain-old common sense at times.

You probably want company more than most, and physical contact and affection are a real stabilizing force for you. They help to ground your natural ability to perhaps dwell a little too much in your mind. You can also be shy socially and easily end up as a wallflower (watching and taking it all in) when you might benefit more from more interaction and group contact. In general what will balance you is anything that serves to ground you, bring you more down to earth, and provide actual physical experience. Your mind is very sharp, and your tongue probably sharper, but you need a lot of experience so that you learn to know what you are so good at talking about.

# Strategy



Given a knowledge of our talents and also our weak spots, we can begin to come up with a strategy to best use our strong points and make up for those areas where we just can't compete. One good approach is to go to school on our weak spots and compensate for them. This is what education is all about. However, this is not our only approach.

Some areas we may just naturally have no appreciable talent. In these cases, we can borrow some talent from others by partnering up with them. This might be a life partnership, of course, but all of our relationships (friends, co-workers, family, etc.) are a matching up of talents and weaknesses on both side. We can make up for what we are missing through forming partnerships with those that have what we lack. And the reverse is also true. We can share our talents with those who have less that we do in that area. Relationships are essential one vast area of talent exchange. Lets' take a look at how you might approach this.

First, your StarType is not one that usually goes it alone or that really enjoys solitude to the exclusion of social contact. It might look that way from time to time, but in reality partnerships of all kind benefit you and allow you peace of mind. Left alone, you are not as productive. And yes you might be considered "needy"

when it comes to interdependency, rather than independence, so make it a virtue rather than a liability.

You have two strategies that will turn the wheel of progress for you. Of course it goes without saying that you will get along with mental types, like a fish in water, but that will not bring anything more than temporary satisfaction.

For real satisfaction seek out friends and co-workers that draw you into having a good time, ones that are fun to be with and who are also touchy-feely. Rub shoulders a bit with the masses. They may throw you into the cold swimming pool of social contact once in a while, but despite your protests, this is really good for you, to be put through contact experience. You grow from it, or rather: it brings you into balance and that allows growth.

With StarTypes you want to befriend the red-bordered cards or the blue-bordered cards with the red squares in them. Relating to red-bordered card elements will provide the most natural chemistry and add some mystery to the friendship or partnership.

If that is too much for you, then your other strategy is to find partners and friends among similar StarTypes and form relationships where you are probably more like buddies than traditional "push me, pull you"



love relationships. This is a more gentle approach, but lacks much of the traditional chemistry that makes a Romeo and Juliet type relationship so exciting and long lasting.

If you find it more comfortable partnering with the same bordered StarTypes, than look to finding some common goal or experience to bind you together and provide some chemistry. It could be children or pets in common, or a shared spiritual view, community service, ecology work - whatever. Common shared interests can be the glue that binds the relationship together.

In summary, you need to be accessed and involved to work at your highest potential. Without that, you are literally out-of-touch and perhaps too theoretical. Working in partnerships and small groups where your conceptual and analytical skills are values is recommended.

# Approach to Relationships



Johnny is perhaps sometimes a little isolated socially, very good with words of course, but actually somewhat shy. He is uncomfortable in a crowd, at least when he is not in control of the situation. In relationships, he almost exclusively assumes the role of the lover, the one who cares for the relationship and who generally takes care of everything. He is looking for a partner who enjoys and deserves attention, to be the object of his love.

When it comes to romance, you are not often going to have too much choice when it comes to what role you will play. It will be that of caretaker, the traditional "The Lover" role, rather than the role of the "Loved One." You just can't help but dote on whomever you love.

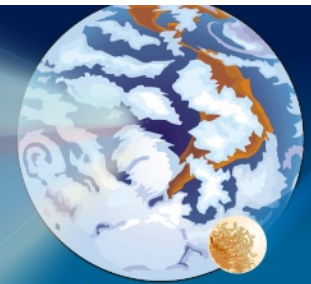
Let's face it, you are probably just too sensitive to play any other role and your StarType in general tends to be somewhat excitable. Any physicality is attractive to you, and you naturally like to see what is going on. You are a born critic and a natural observer, anyway, so why should this be any different?

You can modify this tendency by encouraging more contact in general, not just in a partner situation, by shaking hands, rubbing shoulders, and generally learning to weather more physical contact socially. Your natural critical abilities find you falling into the role of commentator, taking a backseat to whatever is happening, and you would have to counter that by desensitizing yourself in social as well as intimate situations. Get used to it.

Unless you choose a partner just like yourself, which brings its own problems like endless mutual criticism, you probably will end up as the person in the relationship who provides for, takes care of, and looks after things. You are the worrier of the two, and not vice versa. It is a natural role for you, so why fight it?

Instead, become expert at it, and who cares what anyone else thinks? It will make you happy to take care of all the details and be the worry-wart.

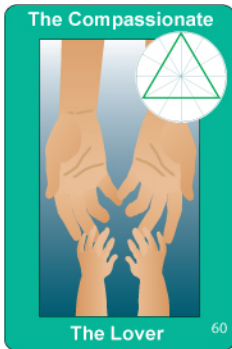
# Star★Type Elements



The table on this page represents the essential StarType elements for each partner, and not just the key StarType for each. These main elements are marked with a checkmark along the left and right sides of the table, along with how many times they occur, their StarType number, and a percentage indication as to how strong the element is (100% is the strongest possible). The four basic relationship types are color-coded from top to bottom, with green for the "Lover" StarType, red for the "Loved One" StarType, blue for the "Independent" StarType, pink for the "Multi-relational" StarType, and yellow for other types.

The purpose of the table is to let you see at a glance the various components of the relationship and their strengths.

## Johnny



Occ.	ST#	%	Description	%	ST#	Occ.
			Compassionate, Big Picture, Lover			
			Proactive, Entrepreneurial			
			Alternate View			
			Psychological, Mental, Complex			
✓	3	#50	01%	Caring, Mental Work		
			Little Obsessive, Recursive Mind			
			Seminal, Deep			
			Attractive, Gregarious, People Loving			
✓	1	#31	48%	Busy Achiever, Doing, Doing		
			Very Independent, Self-sufficient			
			Creative: Acts, then Thinks			
			Conceptual: Thinks, Then Does			
			Very Active Psychological, Mystic			
			Psychological, Spiritual Doer			
			Laser Mind, Can Think and Do			
✓	2	#6	50%	Enjoys Many Contacts, Many Places		
			Reactive, Responds to Anything			
✓	1	#23	52%	Yearning, Waiting, Wishing		
✓	1	#44	45%	Extra Creativity		
			Synchronicity, Coincidence			
✓	1	#52	01%	Completion		



## For Johnny

Johnny's StarType, is the Grand Trine, is the archetype of the care giving StarType family, a classic pattern in the history of astrology, and one that prefers the role of "The Lover" in relationships, the provider of care and affection. The most compassionate of all StarTypes, this pattern is considered the most Bodhisattva-like. Johnny has powerful conceptual abilities, and depends on his mental powers to make his way through life. He thinks before he acts, and usually plans things out far in advance, sometimes preferring to read more about something than to actually do and experience it. And he has clear vision, able to get the big picture, to see the forest AND the trees, right off.

Johnny is perhaps sometimes a little isolated socially, very good with words of course, but actually somewhat shy. He is uncomfortable in a crowd, at least when he is not in control of the situation. In relationships, he almost exclusively assumes the role of the lover, the one who cares for the relationship and who generally takes care of everything. He is looking for a partner who enjoys and deserves attention, to be the object of his love. This is a primary StarType and Johnny should seek out any of the red-bordered cards, which will serve to balance and ground his vision and conceptuality. As for the blue-bordered cards, not shown here, keep in mind that they have the qualities of both the red-bordered and the green-bordered cards within their makeup. When relating to them, he will want to invoke the attention-demanding part of them, having them take on the role of the loved one - someone for him to look after.

# Keywords

- Conceptual.
- Visionary.
- The Lover.
- Caregiver.
- Intellect.
- Compassionate.

# Social Skills



## **Social Being:**

Johnny is not comfortable as a social being, although he may think so. Intellectually social? Yes, and perhaps eager, but rubbing shoulders and the give and take of at a cocktail party? Probably not.

## **Meet & Greet:**

Johnny does not naturally enjoy meeting & greeting, the usual social glad-handing that is expected of one when business calls for it. He likes the intellectual banter, but essentially is shy.

## **Sensitivity:**

Johnny is (or can be) very sensitive, perhaps often somewhat shy, and even self-effacing at times.

## **Wallflower:**

Yes.

## **Private:**

Johnny is not private, but rather open, at least mentally and psychologically. No secrets.

## **Direct/Indirect:**

Johnny is naturally direct and straightforward. What you see is what you get.

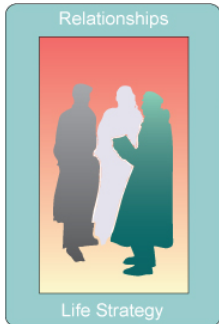
## **Collegial:**

Johnny is always formally (and intellectually) friendly and collegial, but is not naturally warm or very social, probably won't offer you the fraternity handshake.

## **Self-Confidence:**

Johnny is intellectually confident, but may be socially less so.

# Your Approach to Relationships



**Relationships:**

Johnny needs relationships.

**Romantic Role:**

Johnny likes to take on the role of "lover"

or caretaker in a relationship.

**Office Role:**

In an office environment, Johnny prefers the role of supervisor or manager of some kind.

**Independent:**

No.

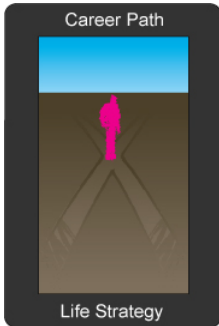
**Interdependent:**

Yes.

**Needy:**

Yes, in relationships.

# Job Placement



**Business type:**  
Conceptual.

**Responsible:**  
Yes, very.

**Management Skills:**  
Excellent.

**Salesperson:**  
No.

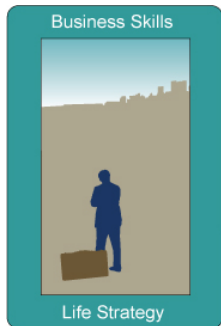
**Teamwork Skills:**  
Intellectual teamwork, yes.

**Advisor:**  
Johnny makes a good advisor.

**Supervising:**  
Yes, the best.



# Business Skills



**Communication Skills:**

Yes, at mental communication.

**Intuitively Creative:**

Not naturally good.

**Work Ethic:**

Very responsible.

**Analytical Skills:**

Excellent.

**Organizational Skills:**

Good organizational skills.

**Detail Work:**

Good at detail work.

**Thoughtful:**

Very.

**Smart:**

Yes, very smart.

**Intellect:**

Excellent.

**Interpersonal Skills:**

Best at verbal and written.

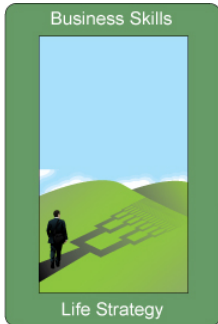
**Problem Solving:**

Good.

**Group Leader:**

Probably not, or if so, then intellectually only.

# Polarities



The following is a simple list of polarities (many traditional) as they relate to Johnny and his particular StarType. These are included on the case that the earlier material is not sufficiently clear on. Perhaps looking at Johnny through this list of polar opposites may help make things more clear and provide a better feeling for this person. Here is the list:

- Host or Guest: Prefers the role of host.
- Impress/Express: Likes to impress.
- Watcher/Watched: Watcher.
- Reason/Intuition: Reason rather than intuition.
- Careful/Careless: Careful.
- In/Out: Out and wants in.
- Evolve/Involve: Wants to be more involved.
- Subject/Object: Assumes the role of subject.
- Lover/Loved One: Likes the role of the 'Lover'.
- Mental/Physical: More mental than physical.
- Self-Conscious?: Yes.
- Sensitivity or Lack-of?: Sensitive.
- Awareness Factor: Very aware.
- Vertigo/Claustrophobia: Vertigo.
- Foresight/Hindsight: Foresight.
- Seeing/Feeling: Seeing.
- Reasonable/Unreasonable: Reasonable.
- Yin/Yang: Yin.
- Subtle/Dense: Subtle.
- Spirit/Flesh: Spirit.
- Service Factor: Born to serve.
- In/Out: Outside looking in.
- Active/Passive: Passive, like Aikido.

# Conclusion



Welcome to StarTypes, your personal astrology report written and illustrated by astrologer/author Michael Erlewine who, with over 40 years of experience in astrology, has written some twenty-some books on astrology and dozens of computer astrological programs. Erlewine writes:

"I have lectured, taught classes, and done private consultations for more years than I want to think about. What I have found works best is a one-to-one presentation of the astrological chart - your personal astrology. In the StarTypes reports, I have tried to do just that: walk you through what is most important about your astrology chart, step-by-step, just as I would if we sat down together for a chart reading. StarTypes Reports are illustrated and easy to read. After all, they are all about you!"